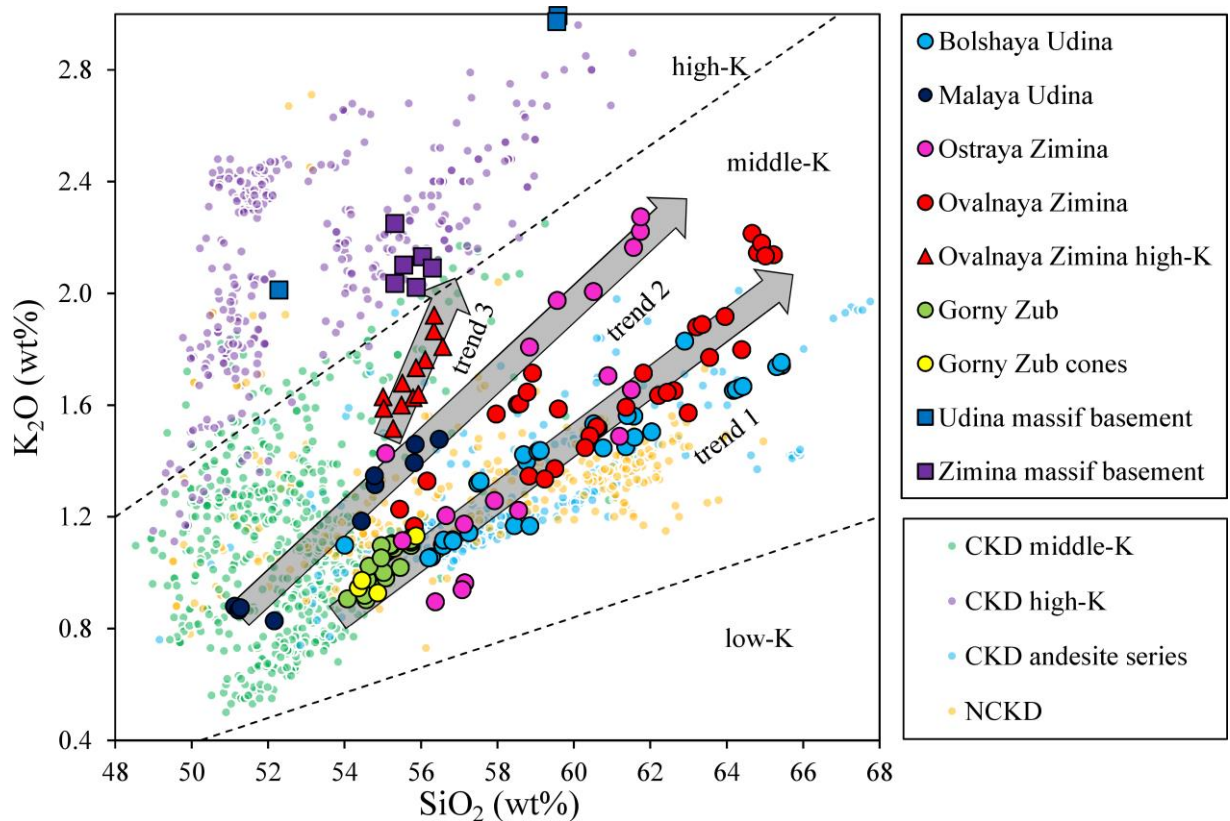


11

!!

"

Fig. 1: K_2O vs. SiO_2 for rocks of southwestern volcanoes of KGV

tgrv'gf "v"xtkcdrg"o cpvrg hmkf "uqtegu"cpf lqt "f khtgtpvkvqp"r tqeguugu"cv'xtkcdrg"r tguvwtgu"qt "y cvgt "eqpvgpv" qeewt "f vtlpi "EMF" gxpqmwkp0

kp"eqpvtcu"v"rxcu"ltqo "vj g"MI X."qrf gt"dcugo gpv'rxcu"ctg"i gqej go kecmf "uko krt "v"j g"r rvcgw'rxcu" cv'Uwf gpc "c"tkxgt"cpf "cm'dgnpi "v"j g"j ki j /M'dcuw/cpf gukg"tqen'ugtgu0P gy "f cv"qp"dcugo gpv'tqemu" vqi gj gt "y kj "r tglkwunf "r wdkuj gf "f cv"uwi i guv"r r gkqf "qh"j ki j /M'xqrecpluo "kp"vj g"MI X" f vtlpi "O kf f ng" Rngkuregpg"lko g'dghgtg"vj g'eqputwvqp"qh"vj g" { qwpi gt. "o wej "o qtg'xtkcdrg"utcvqxqrecpggu0

Compositional relations with adjacent centres of KGV and NCKD rocks. Ego rctgf "v"qvj gt"MI X" rxcu"cpf "xqrecple"tqemu"ltqo "egpvgtu"pqtvj "qh"Mc o ej cvnc'tkxgt "Uj kxgwej . "Mj ctej kpmf . " ctgej p { + "o quv'qh" uwf kgf "uco r ngu"gzegr v'tgpf "5+ltqo "pcttqy "vtgpf u'lp"cm'no clqt"cpf "tceg"grgo gpv'f kci tco u'vj cv'qpnf "uj qy " o kpat "qxgtncr "y kj "vj g"eqo r qukvqp"qh"qvj gt"MI X"xqrecpgu. "gzegr v'Dgl { o kppp { "xqrecpq0Cv"vj g"uco g" O i Q"eqpvgpv."vj gug'rxcu"ctg"r qqtgt "kp"cm'ku. "VlQ4. "R4Q7. "HgQ."cpf "j ki j gt "kp"UkQ4"eqo r ctgf "v"qvj gt"MI X" xqrecpleu"cpf "uj qy " i tgcvt "i gqej go kecnf cpf "r gvtqmi kecnf gxkf gpeg" qh"o ci o cvk "f khtgtpvkvqp" f vtlpi " uj cmjy "etwucnr tqeguupi "Hki 04+0J qy gxgt. "vj gtg"ku'cmo quv'eqo r rvgv'qxgtncr "y kj "Dgl { o kppp { "rxcu."vj wu" hqto kpi "c"o kf f ng/M'ecre/cm'ekpg"vtgpf "Hki 04d+0

Vj g"O i Q+7e"eqttgevgf "o clqt. "tceg"grgo gpw"cpf "tceg"grgo gpv'tcvku"uj qy "c"u { uvgv cvk "l qpcvqp" cetqu"vj g"MI X"uj qy "cp"lpetgcug"lp"lpego r cvkdr. "hmkf /o qdkrg"tceg"grgo gpw"y kj "urcd" f grj "ltqo "382"no " dgrny "cpf gukle"xqrecpgu"lp"vj g"G"v"422"no "lp"vj g"Y 0Vj ku"l qpcvqp"ku"gzr tguvgf "lp"grgxcvgf "NKG. "NTGG." ngy gt "NKGJ HUG" tcvku"ltqo "G"v"Y "cv"pgctn "eqpucpv" O TGG"cpf "J TGG" y j lej "uwi i guv' xtkcdrg" eqpvtkdwkp"qh"urcd"eqo r qpwpv"v"vj g"o cpvrg"uqtegu0Vj g"gzvto g"xctkcvkp."gd 0ltqo "207"v"407" "M4Q"cv" vj g"uco g"72" "UkQ4"lp"o qf gtp"MI X"rxcu" "Hki 03+ y kj "eqo r ctdcnf "uo cmgt"xctkcvkp"lp"qvj gt "lpego r cvkdr" grgo gpw" ecppqv" qpnf "dg" gzr rckpgf "d { " xtkcdrg" f gi tggv" qh" o gnkpi "dw" tcvj gt "uwi i guv' xtkcdrg" gptlej gf lf gr rvgf "o cpvrg"uqtegu"r tkqt "v"lpr w'qh'xtkcdrg"urcd"eqo r qpwpv0

F khtgtpv"o qf gnu. "lpenf kpi "xtkcdrg" f gi tgg"qh"o gnkpi . "o ci o c"o kzkpi . "ltcvkpcn"et { ucnk cvkqp"cv" xtkcdrg"R/V/hQ4/J 4Q"eqpf kkpuy kn'dg"vgvgf "v"wpf gtucpf "vj g"qtki kp"qh"vj gug'xtkcvkp0

Vj g" j ki j gt "UkQ4" cpf "vj g" eqo r qukvqpcn' uko krtkf "Wf kpc" o cuvkh' rxcu" eqo r ctgf "v" rxcu" cv" Dgl { o kppp { "xqrecpq" uwi i guv' vj g" r qukvkxg "qh" gzr qukvxg" gtr vkvu" cpf "vj g" tgegpv' lpetgcug" lp" ugvlo ke" cevkvk { "wpf gt "Wf kpc" o cuvkh' "Ucnf nqx"gv'cnf "423: +eqwf "j gcrf "hwwtg"gzr qukvxg" gtr vkvu"lp"vj ku'ctgc0

Vj ku'tgugctej "y cu'ur r qtvf "d { "i tcpw"Y q"584 I73/3. "THDT"38/77/34262."cpf "THDT"39/77/722270

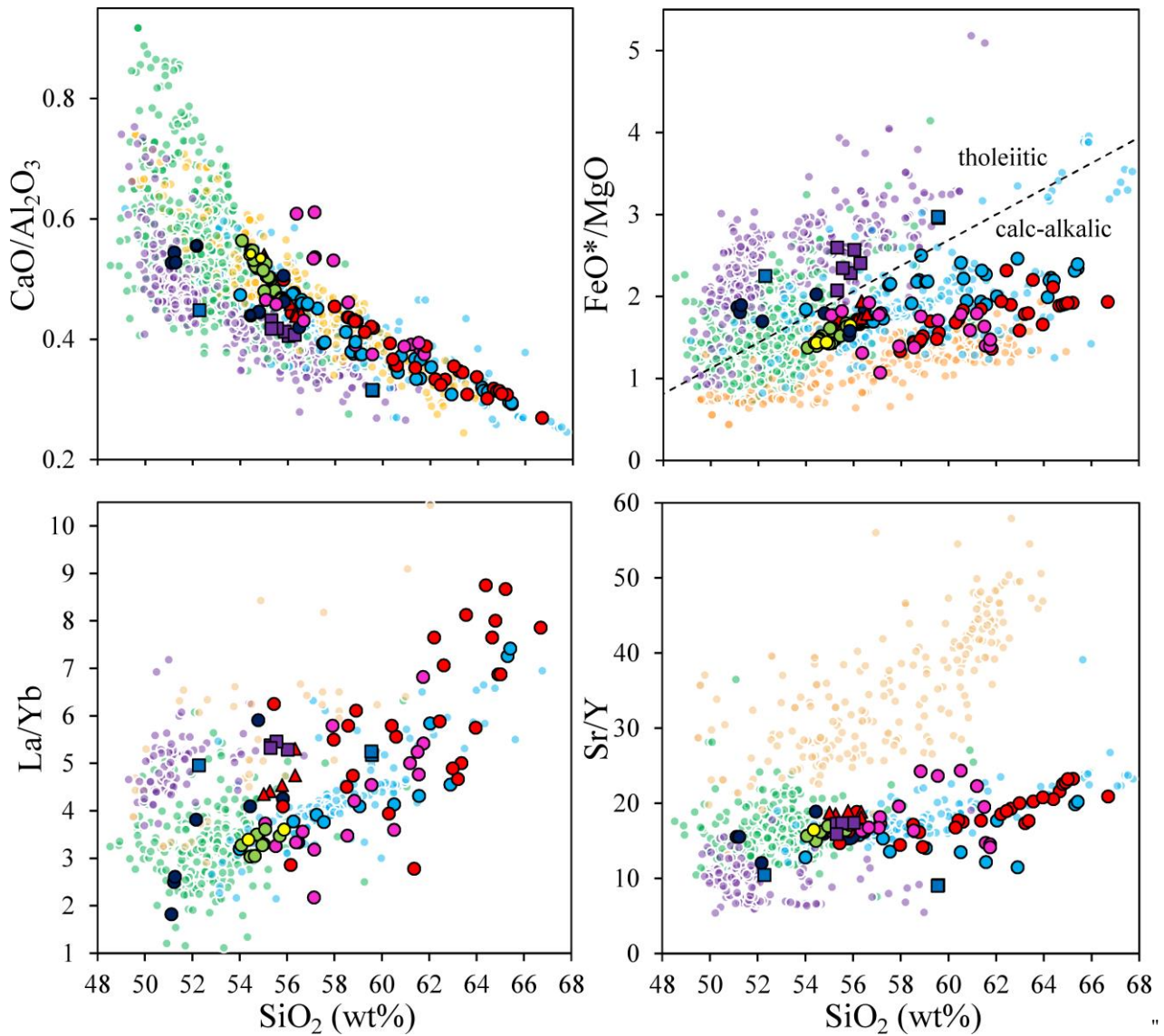


Fig. 2: Variation diagrams for the CKD rocks. Symbols are the same as in Fig. 1

Tghgtgpegu"

Ej wtknqxc."VI 0"I qtf g{ej km"DOP 0" Ky co qtk"J 0" gv' cr0'Rgtqrqi kecn' cpf "i gqej go kecn' gxqnwkp" qh" y g" Vqrncej km'xqreple"o cuukh"Mco ej cme."Twuuk" 1l"J. *Volcanol. Geotherm. Res.*"42370'X0'5290'R0'378/ 3: 30j [wr <1f qkQti B20238110xqri gqtgu04237020480](#)

Vlo gtdegcx."MO 0'Rgtqrqi {" qh" Mn{vej gxunq{" xqrepcgu" kp" Mco ej cme'0 O 0' P cme."3; 890'42; "r 0' *kp" Twuukp+0j [wr <1tgr q0mepgv0w48: 10](#)

Gto cmqx."XOC0'Hqto cvkp" f kuo go dgto gpv"qh" y g" S wcvtpct {" xqreple" tqemu'0 O 0' P gf tc."3; 990'445"r 0' *kp" Twuukp+0'

Ecmlpu."LOC0' 62Ct F: Ct" i gqej tqpqri {" qh" Mj cr kuc" r rvcgw" cpf "Uwf {qpc{c" tkgxt" dcucnu" cpf "dcucnle" cpf gukgu" kp" Egvten' Mco ej cme" F gr tguukp." Mco ej cme." Twuuk" 1l" Nkpnei gu" co qpi " Vgevpleu." Uguo lek{."O ci o c" I gpguku."cpf "Gt wr vkp" kp" Xqreple" Cteu'0 X" Kvgtpcvkpcn' Dlgppkcn' Y qtmij qr " qp" Uwdf vevkp" Rtqeguugu" Go r j cuk kpi " y g" Lcr cp0'Mwtkg0Mco ej cme0Crgwkp" Cteu' Rgtqr cxnqxun' Mco ej cme." Cwi wuv" 43/49." 42260' Rgtqr cxnqxun' Mco ej cme {< Kpukwng" qh" Xqrepcqri {" cpf " Uguo qri {" HGD'TCU."42260R075/760j [wr <1y y 0mepgv0wixuleqphgtgpegulncur hgl lcd43gp0f qe0](#)

O grnguvugx."KK0' Dtekguxc." QOC0' Gtrlej ." GP 0" Mqj j go {cme." P 0' Xqreple" o qwpckpu" cpf "r rckpu" 1l" Mco ej cme." Mwtkg" cpf "Ego o cpf gt" Kmpf u0O 0' P cme."3; 960R0384/4560*kp" Twuukp+0'

Ucmj nqx."XOC0'Xqtqr cgx."R0X0' Mwi cgpniq." [OC0'Ej gdtqx." F 0X0' Wf kpc" uguo le" cevxlk cvkp"4239/423: "1l" *Bulletin of KRAUESC. Earth sciences.*" 423: 0' P q0' 3." K0' 590' R0' 7/90' *kp" Twuukp+0' [j wr <1y y 0mepgv0wllqwtpcnhtcgueltvgrlxky B: 414340](#)